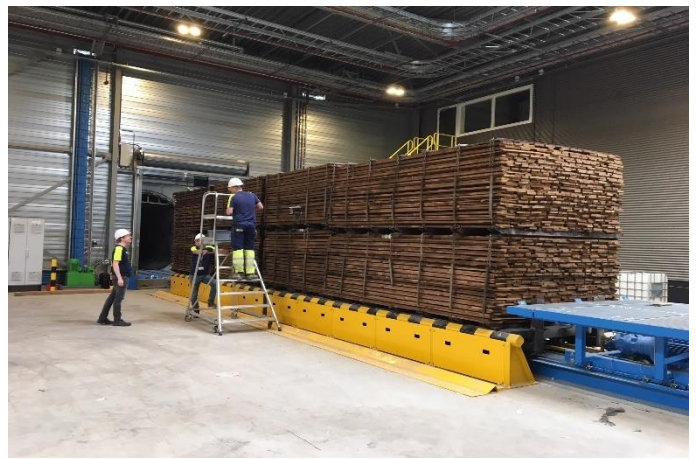


9th European Conference on Wood Modification ECWM9

September 17 and 18, 2018, Arnhem, The Netherlands

PROCEEDINGS



ECWM⁹

The 9th European Conference on **Wood** Modification
The Netherlands • Arnhem • September 17-18, 2018

PROCEEDINGS

9th European Conference on Wood Modification

**Burgers' Zoo
Arnhem, The Netherlands
17-18 September 2018**

In association with:
COST FP1407 ModWoodLife

Edited by:
Jos Creemers, Thomas Houben, Bôke Tjeerdsma, Holger Militz, Brigitte Junge
and Jos Gootjes

Secretariat:
SHR B.V.
Nieuwe Kanaal 9b
6709 PA Wageningen
www.ecwm9.shr.nl



Legal Notice

Although all reasonable efforts were made by the editorial team to ensure the scientific quality of the contents of these conference proceedings, the final responsibility for the contents of individual articles therein remains with the respective authors. The editors accept no responsibility for the information contained herein. The inclusion of information in this publication does not constitute any form of endorsement by the editors. The editorial team is not responsible for the contents of external websites referred to in this publication.

No permission is required to reproduce or utilise the contents of these abstracts other than in the case of diagrams, images, or other material from other copyright holders. In such cases the permission of the original copyright holder must be obtained. The proceedings may be sited as *Proceedings of the 9th European Conference on Wood Modification 2018, Arnhem, The Netherlands*.

Copyright © SHR B.V.

Nieuwe Kanaal 9^b, 6709 PA Wageningen, The Netherlands

www.shr.nl

ISBN: 978-90-829466-1-1

Preface

SHR was one of the first research institutes in Europe, who already in the 1990's did substantial research work to develop wood modification processes. It appeared, that this research area was very complex, and that for a successful application of potential processes different expertise's was needed. A good network between research partners and industry was needed and the "European Network on Wood Modification" was created. 15 years ago, in 2003, the first European Conference on Wood Modification "ECWM" was held to present the outcomes of this EU financed network. Since than, ECWM's were held each 2-3 years at different places around Europe, and now we can celebrate the 9th ECWM in the Netherlands, organized by SHR where it all began.

As already before, ECWM 9 is linked up to the European COST organisation. Thanks to the COST Action FP 1407 ModWoodLife to join and strengthen our network!

The participation of researchers of all around the world make it obvious that the name "European conference" is much too small...so: a warm welcome to researchers from industry and academia from Europe and abroad! This success has led, once again, to a large number of abstracts submitted to the organizers. In general, these abstracts were of a high quality and the members of the Scientific Committee had a hard time to select 44 full presentations and 50 poster presentations out of the many applications. We hope we have found the right balance between scientific and applied presentations to reach the key goal of ECWM: to attract researchers from academia and industry to join their expertises in this very exciting research area "wood modification".

The local conference organizers from SHR have done a great job this past year to make us feel welcome in The Netherlands and to let the conference be a success. Thank you very much to Bôke and team!



Prof. Dr. Holger Militz
Chairman of Scientific Committee
Georg-August-University Göttingen, Germany

Scientific Committee

Dr. Julia Milne e Carmo,	Carmo Group, Portugal
Prof. Dr. Callum Hill,	JCH Industrial Ecology Ltd., United Kingdom
Dr. Dennis Jones,	Timber Consultancy (UK) / LTU, Sweden
Prof. Dr. Holger Militz,	Göttingen Uni., Germany (Chairman of Scientific Committee)
Mr. Jos Creemers,	SHR, The Netherlands
Mr. Bôke Tjeerdsma,	SHR, The Netherlands
Prof. Dr. Joris Van Acker,	Ghent Uni., Belgium
Dr. Andreja Kutnar,	University of Primorska, Slovenia (FP 1407)

Local Organising Committee

Mr. Bôke Tjeerdsma,	SHR; The Netherlands (Chairman of Organizing Committee)
Mrs. Marina van der Zee,	SHR; The Netherlands
Mr. Jos Creemers, SHR	SHR; The Netherlands
Dr. René Klaassen,SHR	SHR; The Netherlands
Mr. Bas Holleboom, SKH	SKH; The Netherlands
Mrs. Mariena Mooi, SHR	SHR; The Netherlands
Mrs. Jos Gootjes, SHR	SHR; The Netherlands

Wood modification in practice

The European Conference on Wood Modification takes place on the 17th and 18th of September 2018 in Arnhem, The Netherlands and is organised by SHR. At this conference researchers and people from industry from all over the world will come together to share their knowledge and experiences with the latest developments on wood modification methods, applications and products. The conference was given the subtitle “Wood modification comes home”, which refers to the role The Netherlands and SHR have played – and still play – in the development and industrial application of modified wood.

Techniques and methods designed for improving wood properties are almost as old as mankind itself. However the scientific and industrial rise of wood modification became significant under the influence of a number of social and economic developments in the eighties and nineties of the previous century. A strong need was felt to find alternatives for the use of tropical hardwoods and preservative treated wood, which were both under pressure for a variety of reasons. The discussions regarding a clean environment, sustainable forest management, wood use and the increasing wood demands from emerging markets in Asia also had a big impact. Wood modification was recognized to have the ability to offer a more, better and sustainable way of making use of wood as a durable material in a broad range of applications. Besides that, it was found to be a supreme method for upgrading the properties of lesser used timber species and to provide technical solutions to overcome some of the natural deficiencies of wood as water uptake, decay and dimensional changes.

Over the last decades an enormous amount of scientific work has been performed and published. We have seen many innovative modification ideas, methods and techniques passing by during the previous eight ECWM's. To make a real impact, ideas need to be developed further and put into practice. We are proud that in The Netherlands we have created a setting with a high level of knowledge, innovative thinking combined with entrepreneurship, which lead to a variety of flourishing companies involved in industrial production of modified wood. Not only producing companies, but also the wood processing industry has adopted modified wood as a highly appreciated durable material. We can declare that modified wood has become a lasting factor in the wood processing industry.

For these reasons SHR and we as the organising team, are excited to welcome you all here in The Netherlands for the 9th European Conference on Wood Modification. We hope you will enjoy your stay here in Arnhem and become inspired by all attendees, presenters and new insights this conference has to offer.

Welcome!

The organising team

COST 1407 - Foreword

It is our pleasure that COST Action FP1407 “Understanding wood modification through an integrated scientific and environmental impact approach” (ModWoodLife) in part of 9th European Conference of Wood Modification. The conference brings together researchers from across Europe and beyond that jointly are addressing the mounting pressure on renewable resources (as a material source, for recreational, ecological, and other uses). By maximising the efficiency of materials derived from them, the wood modification community plays an important role. The efficiency can only be achieved if new methods to improve the functionality, durability, properties, and environmental impacts will be developed. Wood modification addresses these requirements directly, allowing wood to be used in more applications, including increased use of under-utilised species. Wood modification also addresses undesirable characteristics of wood such as fungal resistance, UV-stability, and moisture sensitivity. The COST Action FP1407 has been successful in addressing these needs in the past 3 years. We are in the last year of the Action and therefore it is even more important for us to be at ECWM9. Only sustainable collaboration and joint efforts will deliver the impacts. That objective of the Action FP1407, to characterise the relationship between wood modification processing, product properties, and the associated environmental impacts in order to maximise sustainability and minimize environmental impacts, has great value for the forest sector, for researchers, and society at large.

Wishing you a successful and memorable conference full of fruitful discussions.

Andreja Kutnar
Chair, COST FP1407

Denis Jones
Vice-Chair, COST FP1407

Table of Contents

Preface	3
Table of contents	7
 Session One: Wood Modification World-wide - keynote presentations	
Modified wood in circular economy – a critical review	16
<i>Henrik Heräjärvi, Janni Kunttu, Elias Hurmekoski, Teppo Hujala</i>	
A review of wood modification across Europe as part of COST FP1407	24
<i>Dennis Jones, Dick Sandberg, Andreja Kutnar</i>	
What is wrong with Wood Modification in the U.S.?	32
<i>Jeffrey Morrell</i>	
 Session Two: Commercial and Market Opportunities for Modified Wood	
New Standards for Approval of Modified Wood within the Nordic Wood Preservation Council (NWPC)	40
<i>Niels Morsing, Søren Bang-Achton, Emil Engelund Thybring, Morten Klamer</i>	
Kebony Clear – Produced in Belgium	48
<i>Per Brynildsen, Omar Roels, Bruno Van den Branden</i>	
Improved dimensional stability of polypyrrole enriched spruce as an indication for chemical change	56
<i>Andries van Eckeveld, Rabi Malki, Michael Sailer, Jacco Eversdijk</i>	
Practical experience of acetylated wood fibre panel products in Dutch door manufacturing	64
<i>Jeroen Lückers</i>	
Wood Modification with DMDHEU (1.3-dimethylol-4.5-dihydroxy-ethyleneurea) – Status quo and latest research activities	74
<i>Lukas Emmerich, Holger Militz</i>	
Architects perception of modified wood: a parallel study in selected countries of Europe	82
<i>Manja Kitek Kuzman, Eva Haviarova, Dick Sandberg</i>	
Enhancing the Properties of ThermoWood® with Phenolic Resin Treatment	91
<i>Reeta Stöd, Janne Pynnönen, Duncan Mayes, Bodo Caspar Kielmann</i>	

Session Three: Poster Session 1

Effect of Thermo-Mechanical Treatment on Properties of Parica Laminated Veneer Lumber (<i>Schizolobium amazonicum</i> Huber ex Ducke)	98
<i>Mírian de Almeida Costa, Cláudio Henrique Soares Del Menezzi</i>	
TanWood®: The Brazilian Process of Thermal Modification of Wood	104
<i>Leonardo Puppi Bernardi, Djeison Cesar Batista</i>	
Examining the coating performance of finishes on acetylated hornbeam wood (<i>Carpinus betulus</i> L.)	112
<i>Fanni Fodor, Róbert Németh</i>	
Colour response of heat treated spruce and pine with different surface coatings in outdoor exposure	119
<i>Niclas Björngrim, Marie Hartwig, Olle Hagman, Tom Morén</i>	
New substrates for wood modification. Characterising pore size distributions in variously dried softwood	123
<i>Warren Grigsby, Elizabeth Dunningham, Hank Kroese</i>	
Determination of resistance of thermally treated wood to weather conditions in different countries (HTW) - Preliminary results	126
<i>Idalina Domingos, José Ferreira, Luisa Cruz-Lopes, Júlia Carmo, Jorge Martins, René Herrera, Lina Nunes, Bruno Esteves</i>	
Investigation of <i>Abies alba</i> wood thermal stability according to its radial position	131
<i>Joël Hamada, Anélie Pétrissans, Julien RuellE, Frédéric Mothe., Francis Colin, Mathieu Pétrissan, Philippe Gérardin</i>	
Properties improvement of bamboo materials through furfurylation	137
<i>Li Wanju, Wang Hankun, Liu Minghui, Yu Yan</i>	
Veneer modification with fire retardant chemicals	143
<i>Saara Hautamäki, Michael Altgen, Tuomas Hänninen, Lauri Rautkari</i>	
Natural Weathering and Photostability of Wood Modified by Fatty Acid esters	149
<i>Mohamed Jebrane, Nasko Terziev, Ivo Heinemaa</i>	
Effects of thermal modification on bending properties and chemical structure of Iroko and Padauk	155
<i>Michal Kroupa, Milan Gaff, Olov Karlsson, Olena Myronycheva, Dick Sandberg</i>	
Modified wood in actual use and its weathering performance after outdoor exposure	162
<i>Ville Lahtela, Tim Kärki</i>	
Performance of thermal modified radiata pine in real cases of facades and deckings in North Spain	167
<i>David Lorenzo, Alfonso Lozano, Juan Fernández-Golfin, Manuel Touza, René Herrera</i>	

Table of Contents

Water free PEG impregnation of hardwood veneer using a roll press	173
<i>Tillmann Meints, Axel Rindler, Niklas Bugelnig, Christian Hansmann</i>	
The impact of cerium dioxide nanoparticles on thermally modified wood-coating system during weathering	177
<i>Josip Miklečić, Vlatka Jirouš-Rajković</i>	
Application of time-temperature-humidity superposition to the hygrothermally accelerated ageing of spruce wood	181
<i>Eiichi Obataya, Nanami Zeniya, Kaoru Endo, Miyuki Matsuo-Ueda</i>	
Preliminary studies on the effect of acetylation and subsequent weathering on tensile strength and stiffness of Rubber wood (<i>Hevea brasiliensis</i>)	187
<i>Samuel Olaniran, E. Cabane, M. Rüggeberg</i>	
Mild torrefaction pre-treatment of eucalypts aiming at its energetic valorisation	193
<i>Solange de Oliveira Araújo, Duarte M. Neiva, Angélica de Cássia Carneiro, Bruno Esteves, Jorge Gominho, Helena Pereira</i>	
Influence of various polyethylene glycol treatments on the dimensional stability of beech wood.	199
<i>Sabrina Puttmann, Lukan Müller, Bertil Burian, Marcus Müller</i>	
Adhesion of coatings to plasma modified wood at accelerated weathering	205
<i>Ladislav Reinprecht, rADOVANTiño, Marek Šomšák</i>	
Measuring Accessibility of OH groups in Scots Pine with Dynamic Vapour Sorption Apparatus	210
<i>Tuuli Uimonen, Saara Hautamäki, Maija Kymäläinen, Lauri RauTkari</i>	
Plasma treatment of wood veneers: a review	216
<i>Richard Wascher, Georg Avramidis, Holger Militz, Wolfgang Viöl</i>	
Saturated gaseous ammonia treatment for improved densification of beech wood – Sorption and mechanical properties	224
<i>Mario Zauer, Tobias Dietrich, Herwig Hackenberg, André Wagenführ</i>	
Water vapour diffusion through acetylated wood with different weight percent gain (WPG)	230
<i>Ava Khodabakhshi Koulaei, Asghar Tarmian, Davood Efhamisisi, Ali Abdulkhani</i>	
Session 4A: Properties 1	
The potential for use of acetylated wood in musical instruments making	236
<i>Stergios Adamopoulos, Sheikh Ali Ahmed, Chiel Lankveld</i>	
Influence on acoustical properties of resonant soundboard material through different processes of thermal modification	244
<i>David Zerbst, Lothar Clauder, Dave Olson, Alexander Pfriem</i>	

Table of Contents

Measuring the Free Hydroxyl Content in Wood Modified by Acetic or Propionic Anhydride	251
<i>Callum Hill, Greeley Beck, Erik Larnøy, Sarah Strohbusch, Holger Militz</i>	
Pre-treatment with Ionic Liquids or Organic Superbases to Reduce Spring-Back and Set-Recovery of Surface-Densified Scots pine	259
<i>Benedikt Neyses, Olov Karlsson, Dick Sandberg</i>	
Potential solutions for gluing acetylated wood in load bearing constructions	267
<i>Andreas Treu, Ronny Bredesen, Ferry Bongers</i>	
Combustion behaviour of wood chemically modified with DMDHEU-, PF-, and MF-resins	275
<i>Zhijun Zhang, Zefang Xiao, Holger Militz, Carsten Mai, Yanjun Xie</i>	
 Session 4B: Thermal Modification	
Potential to limit variation in durability of thermally modified timber	284
<i>Joris van Acker, Jan Van Den Bulcke</i>	
Thermovuoto thermal modification of eight European wood species	292
<i>Ignazia Cuccui, Nasko Terziev, Giovanna Bochicchio, Ottaviano Allegretti</i>	
Differences in the mechanical behaviour of wood after thermal modification in oven-dry or water-saturated state	300
<i>Michael Altgen, Tuuli Uimonen, Lauri Rautkari</i>	
Thermal modification of wax impregnated wood	308
<i>Miha Humar, Davor Kržišnik, Boštjan Lesar, Nejc Thaler, Aleš Ugovše, Gregor Rep</i>	
The role of accessible hydroxyl groups in reversible and irreversible EMC changes by thermal wood modification	316
<i>Wim Willems, Michael Altgen, Lauri Rautkari</i>	
 Session 5: COST FP 1407	
Wood Furfurylation as a way to valorise European Beech and promote Circular and Bio-Economy	323
<i>Christine Gérardin, Aurélia Imbert, Prabu Satria Sejati, Emmanuel Fredon, Stéphane Dumarçay, Eric Masson, Arnaud Besserer, Benoit Laibe, Rémi Laibe, Hugo Sellier, Philippe Gérardin</i>	
Dynamic Mechanical Thermal Analysis of Wood Modified with Bio-Polyesters	331
<i>Charlotte Grosse, Morwenna Spear, Simon Curling, Marion Noël, Lauri Rautkari, Tuuli Uimonen, Philippe Gérardin</i>	
Perception and evaluation of modified wood	339
<i>Dean Lipovac, Michael D. Burnard, Andreja Kutnar</i>	

Table of Contents

Valorization of Beech Wood through Development of Innovative Friendly Environmentally Chemical Modification Treatments	347
<i>Mahdi Mubarak, Stéphane Dumarcay, Holger Militz, Philippe Gérardin</i>	
Infrared spectroscopy and chemometric methods for the evaluation of the thermal/chemical treatment effectiveness of hardwoods	355
<i>Carmen Mihaela Popescu, Davor Kržišni, Miha Hočevár, Miha Humra, Nejc Thelar, Maria-Cristina Popescu, Dennis Jones</i>	
Performance of modified wood in service – multi-sensor and multi-scale evaluation	363
<i>Anna Sandak, Jakub Sandak, Marta Petrillo, Paolo Grossi</i>	
Carbon footprint of decking materials- a comparison of modified wood and preservative treated wood	371
<i>Lars Tellnes, Gry Alfredsen, Per Otto Flæte, Lone Ross Gobakken</i>	
 Session Six A: Properties 2	
Strength classification of acetylated radiata pine	380
<i>Ferry Bongers, John Alexander</i>	
Effect of DMDHEU modification on physical and mechanical properties of top-layer lamellas for multi-layer parquet flooring	386
<i>Lukas Emmerich, Holger Militz</i>	
Cutting forces when machining thermally modified poplar – preliminary results	396
<i>Giacomo Goli, Rémi Curti, Bertrand Marcon, Antonio Scippa, Marco Fioravanti, Gianni Campatelli, Louis Denaud</i>	
Properties of MMA treated thermally modified Norway spruce wood	401
<i>Boštjan Lesar, Luka Škrlep, Miha Humar</i>	
Differential expression of <i>Postia placenta</i> wood decay genes in modified wood	410
<i>Rebecka Ringman, Annica Pilgård, Martina Kölle, Klaus Richter</i>	
 Session Six B: Chemical Modification	
Suitability of Lignin-Derived Monophenols to Replace Phenol in Phenol-Formaldehyde Resin for the Use in Wood Treatment	419
<i>Vladimirs Biziks, Marco Fleckenstein, Carsten Mai, Holger Militz</i>	
A new method of wood protection by chemical modification with polyglycerol succinate copolymer	427
<i>Clément L'Hostis, Emmanuel Fredon, Marie France Thevenon, Philippe Gérardin</i>	
The effect of humidity and temperature on the dynamic-mechanical behaviour of phenol-formaldehyde impregnated beech wood veneer	435
<i>Leo Felix Munier, Tom Franke, Nadine Herold, Alexander Pfriem</i>	

Table of Contents

Biopolyesters for wood modification: technical validation towards implementation	441
<i>Marion Noël, Charlotte Grosse, Ingunn Burud, Marie-France Thévenon, Philippe Gérardin</i>	
The Maillard reaction for wood modification: The influence of reagent concentrations, reaction temperature and soaking time on the leachability and cell wall penetration of reagents	449
<i>Kelly Peeters, Andreja Kutnar, Črtomir Tavzes, Jaka Pečnik, Callum A.S. Hill</i>	
Session Seven: Poster Session 2	
Wood thermal modification and impregnation: some aspects of double treatment	458
<i>Bruno Andersons, Dace Cirule, Nīna Kurnosova, Ilze Irbe, Ingeborga Andersone, Oskars Bikovens, Andis Antons, Edgars Kuka, Žanete Zommere</i>	
Hydrophobisation of hardwood surfaces by means of environmentally-friendly fine wax particles	464
<i>Benjamin Arminger, Wolfgang Gindl-Altmutter, Christian Hansmann</i>	
Further Treatment Option after Longitudinal Wood Compression	469
<i>Mátyás Báder, Róbert Németh</i>	
Effect of combined modification processes on the physical properties of wood	475
<i>Miklós Bak, Róbert Németh, Norbert Kelemen</i>	
Bending properties and strain fields around knots in thermally modified timber	481
<i>Joran van Blokland, Stergios Adamopoulos, Anders Olsson, Jan Oscarsson</i>	
Thermomechanical (TM) treatment of beech wood (<i>Fagus sylvatica</i> L.) to substitute Indian rosewood (<i>Dalbergia latifolia</i> ROXB.) in musical instruments - mechanical and acoustic properties	487
<i>Tobias Dietrich, Dr. Mario Zauer, Robert Krüge, Prof. Dr. André Wagenführ</i>	
4 years field study in contact with the ground of thermomodified Scots pine sapwood	493
<i>Andrzej Fojutowski, Andrzej Noskowiak and Aleksandra Kropacz</i>	
Mineralization of wood with calcium oxalate	498
<i>Tom Franke, Thomas Volkmer</i>	
Preparation of thin functional coatings on wood and WPC materials using atmospheric pressure plasma jets	504
<i>Sven Gerullis, Andreas Pfuch, Florian Kettner, Katharina Plaschkies, Bernd Grünler, Mario Beyer, Gennadi G. Volokitin</i>	

Table of Contents

Investigation of Birch Wood Impregnation with Phenol-Formaldehyde (PF) Resins	510
<i>Juris Grinins, Ilze Irbe, Vladimirs Biziks, Janis Rizikovs, Sascha Bicke, Holger Militz</i>	
Thermal properties and density profile of poplar wood (<i>Populus nigra</i> L.) thermally and thermo-mechanically modified	516
<i>Marek Grzeřkiewicz, Karol Poddębski</i>	
Water sorption properties of surface charred wood	522
<i>Maija Kymäläinen, Saara Hautamäki, Lauri Rautkari</i>	
Energy dispersive x-ray fluorescence (ED-XRF) for the multi-elemental analysis of thermally modified wood treated with coatings systems	528
<i>René Herrera Díaz, Marco Fellin, Martino Negri, Jalel Labidi</i>	
Thermowood® vs Termovuoto process – comparison of thermally modified timber in industrial conditions	533
<i>Mohamed Jebrane, Ignazia Cuccui, Ottaviano Allegratti, Ernesto Uetimane Jr., Nasko Terziev</i>	
Study on Drying Characteristics of Poplar Wood Impregnated with Urea-formaldehyde Resin	539
<i>Yang Lihu, Yuan Haiguang</i>	
Life cycle assessment of bio-based façades during and after service life: maintenance planning and re-use	545
<i>Marta Petrillo, Jakub Jakub, Anna Sandak, Paolo Grossi, Andreja Kutnar</i>	
Raman spectral imaging of chemically modified Scots pine	551
<i>Carmen Mihaela Popescu, Lauri Rautkari, Michael Altgen, Tiina Belt, Mikko Mäkelä</i>	
Changes in longitudinal modulus of elasticity of Douglas-fir during low temperature thermal treatment	557
<i>Dan Ridley-Ellis, Carmen-Mihaela Popescu</i>	
Investigation of the effect of moderate heat treatment on wood hygroscopicity by NMR relaxometry	563
<i>Leila Rostom, Denis Courtier-Murias, Stéphane Rodts, Sabine Caré</i>	
Effect of wood modification and weathering progress on the radiation emissivity	569
<i>Anna Sandak, Jakub Sandak, Marta Petrillo, Paolo Grossi</i>	
Composition of monosaccharides in aqueous extracts from thermally modified wood	575
<i>Ekaterina Sidorova, Olov Karlsson, Dick Sandberg</i>	
Insights into stability of glued joints between thermally modified timber: adaptation of an artificial weathering test	581
<i>Morwenna Spear, Raisa Teciu, Graham Ormondroyd</i>	

Table of Contents

Water resistant tannin polymers	587
<i>Gianluca Tondi, Lukas Sommerauer</i>	
Dynamic and static mechanical properties of <i>Eucalyptus nitens</i> thermally modified in an open and closed reactor system	592
<i>Maximilian Wentzel, Christian Brischke, Holger Militz</i>	
Session 8: Performance	
Enhancing the material properties of wood through furfurylation	600
<i>Wanju Li, Changhua Fang, Hankun Wang, Xuexia Zhang, Dan Ren, Yan Yu</i>	
Comparative studies on the biological durability of identical thermally modified wood from field and laboratory tests	608
<i>Sven Hertrich, Lothar Clauder, Silke Lautner, Alexander Pfriem</i>	
Appearance of solid wood decking: requirements and assessment	616
<i>Wolfram Scheiding, Philipp Flade, Katharina Plaschkies, Björn Weiß</i>	
Monitoring the performance of Accoya in different applications	623
<i>René Klaassen, Bôke Tjeerdsma, René Hillebrink</i>	
Performance of chemically modified wood under marine conditions during nine years of exposure	630
<i>Christian Brischke, Antje Gellerich, André Klüppel, Holger Militz</i>	

Perception and evaluation of modified wood

Dean Lipovac, Michael D. Burnard² and Andreja Kutnar³

¹InnoRenew CoE, Livade 6, 6310 Izola, Slovenia [email: dean.lipovac@innorenew.eu]

²InnoRenew CoE, Livade 6, 6310 Izola, Slovenia; University of Primorska, Andrej Marušič Institute, Muzejski trg 2, 6000 Koper, Slovenia [email: mike.burnard@innorenew.eu]

³InnoRenew CoE, Livade 6, 6310 Izola, Slovenia; University of Primorska, Andrej Marušič Institute, Muzejski trg 2, 6000 Koper, Slovenia; Faculty of Mathematics, Natural Science, and Information Technology [email: andreja.kutnar@innorenew.eu]

Keywords: evaluation, perception, preference, tactile, visual, wood modification

ABSTRACT

Wood modification processes improve many characteristics of wood that are appreciated among building professionals. The same modification processes also change characteristics of wood that are important to laypeople, such as wood's visual (e.g., colour) and tactile (e.g., roughness) properties. Since these properties are crucial in people's perception and evaluation of materials, it is necessary to study how people perceive and evaluate modified wood. To assess human perception and evaluation of modified wood compared to untreated wood and steel, we prepared six cylindrical handrail samples. They were from unmodified spruce, unmodified pine, acetylated radiata pine, thermally modified spruce, thermally modified pine or stainless steel. 50 participants aged 65 or above rated all samples in random order on a 9-item semantic differential scale, which consisted of sensory (e.g., rough-smooth) and evaluative (e.g., like-dislike) pairs of descriptors. The study consisted of a tactile only task, visual-tactile task, and ranking task. The results indicate that modified wood is perceived and evaluated similarly to untreated wood both in the tactile and the tactile-visual task, while the stainless steel was perceived as considerably different than all types of wood. Ratings of the same handrails between the tactile and the tactile-visual task were similar, which suggests that touch has an important role in perception and evaluation of materials. The two highest ranked handrail samples were both manufactured from modified wood. Taken together, the findings indicate that modified wood possesses tactile and visual features that are comparable to untreated wood and are in general liked among older adults. These findings encourage the use of wood in indoor environments.

INTRODUCTION

Wood modification processes, such as thermal modification, can enhance several characteristics of wood including dimensional stability, durability against decay, and increased resistance against fungi and insects (Sandberg *et al.* 2017). Since these enhancements are useful in the construction field, it is not surprising they are valued among building professionals. However, modified wood does not obtain only transformed mechanical, biochemical and thermal properties, but also qualities that are available directly to our senses, such as colour, dryness or roughness (Bakar *et al.* 2013, Esteves and Pereira 2009). The combination of these basic sensory properties plays an important role in the general evaluation of materials by laypeople, where characteristics such as pleasantness, price, naturalness, and others are assessed (Fujisaki *et al.* 2015, Kidoma *et al.* 2017).

Better evaluated materials are not only more attractive to consumers, but can also provide direct health benefits. Based on the tactile information, wood is evaluated more favourably than marble, tile, and steel. In addition, subjects touching wood experience improved mood and

decreased physiological arousal when compared with the tactile experience of other common materials (Ikei *et al.* 2017b). Even when the differences between materials do not seem significant, resulting perceptions and evaluations are nonetheless changed. Different coatings on the same material are enough to produce distinct evaluations and physiological reactions (Bhatta *et al.* 2017, Ikei *et al.* 2017a). For instance, subjects touching uncoated wood rated it as more natural than wood with either oil, vitreous, urethane or mirror finish. A mirror-finished wood sample was in general rated as the least favoured and was the only material in the study to induce an undesirable increase in physiological arousal (Ikei *et al.* 2017a). Along with the tactile qualities, visual characteristics of materials also play an important role in the evaluation of materials. For example, brighter samples of wood are perceived as more new and relaxing, but less interesting than darker materials (Fujisaki *et al.* 2015). Additionally, visual exposure to a wood panel induces improved mood and a decrease in physiological arousal, while watching a steel panel produces the opposite effect (Sakuragawa *et al.* 2005).

Taken together, current findings suggest that physical qualities of materials significantly influence human perception and evaluation, which is, in turn, associated with changes in mood and physiological states. Therefore, to be able to choose and develop appealing and healthy materials, it is important to assess how people perceive and evaluate them. Since modified wood exhibits several advantages over untreated wood, it seems reasonable to predict that its usage will keep increasing over time. However, it is not known how people perceive and evaluate wood that undergoes modification processes. Investigating this will lead us towards creating new materials that are not only valuable in construction, but also attractive and healthy for everyday users. This is especially important in the indoor environments occupied by aging individuals, whose physical abilities may be limited, which often results in a need for supportive/assistive elements of the environment. One of the features that can significantly contribute to the physical mobility of older adults is the availability and suitability of support rails and handrails.

Our study assessed how people perceive and evaluate handrails manufactured from modified wood compared to handrails produced from untreated wood and stainless steel based on touch alone in addition to touch and vision combined. Furthermore, we examined which sensory tactile and visual characteristics (e.g., roughness, lightness) are associated with general evaluation and preference of the materials. Finally, we investigated perception and evaluation of the same materials between the tactile and the tactile-visual task.

EXPERIMENTAL

Handrail samples

To investigate perception and evaluation of modified wood we prepared six cylindrical handrail samples. One sample was produced from stainless steel, while the remaining five were manufactured from either untreated or treated spruce or pine. Specifically, we included unmodified spruce, unmodified pine, acetylated radiata pine, thermally modified spruce, and thermally modified pine. The thermal modification was done with the commercial ThermoD process at 212°C and superheated steam at Heatwood (Hudiksvall, Sweden). Handrail samples measured 42mm in diameter and were 30cm long. Each sample was mounted on a wooden base covered with white foil measuring approximately 30 x 15 x 5 cm. All six samples are presented below (Figure 1).



Figure 1: Handrail samples (from left to right: unmodified spruce, unmodified pine, acetylated radiata pine, thermally modified pine, thermally modified spruce, stainless steel)

Procedure

The study consisted of three parts. In the first part, participants separately rated each handrail sample by touch only – they were instructed to keep their eyes closed (tactile task). Samples were presented to them in random order. For each handrail, subjects provided a verbal answer for each item on a semantic differential scale that was read to them. In the second part of the study, participants rated the samples again in the same order, except they were able to both touch and see the handrails (tactile-visual task). In the third part, the participants were presented all the samples at once to simultaneously see and touch. They were asked to rank them from the most to least preferred by placing cards numbered from one (preferred) to six (least preferred).

Semantic differential scale

The scale was partly based on the descriptors of the Tactile Perception Task (TPT; Guest *et al.* 2011) that were translated to Slovene. TPT assesses both sensory (e.g., dry) and evaluative (e.g., pleasant) aspects of touch. Some descriptors in the TPT were excluded since they were judged as inappropriate for the assessment of chosen materials (e.g., sensual). We also excluded descriptors that were similar in meaning to already adopted descriptors (e.g., we excluded “enjoyable” due to already including “pleasant”). To each descriptor that remained, we added a polar opposite descriptor and ended up with five word pairs (e.g., pleasant – unpleasant). In addition to the descriptors adopted from the TPT, we included one pair of tactile descriptors (soft – hard) and two pairs of visual descriptors (dark – light, shiny – matte) that were used in other studies (e.g., Fujisaki *et al.* 2015) and deemed relevant. Furthermore, we added three relevant pairs of evaluative descriptors (unusual – usual, natural – artificial, cheap – expensive). In total, the scale consisted of 11 word pairs. Two of these (dark – light, shiny – matte) were used only in the second part of the study (tactile-visual task). Six of 11 pairs of descriptors measured basic sensory properties (rough – smooth, warm – cold, dry – damp, hard – soft, dark – light, shiny – matte) while the remaining five measured the evaluation of materials (unusual – usual, natural – artificial, cheap – expensive, pleasant – unpleasant, dislike – like). For each word pair, subjects selected their answer from a 5-point scale that consisted of the adverbs “considerably”, “somewhat”, “in the middle”, “somewhat” and “considerably”. For example, on a “rough – smooth” pair, subjects could indicate that the rated sample is “considerably rough”, “somewhat rough”, “in the middle”, “somewhat smooth” or “considerably smooth”. The complete scale is presented below (Table 1).

Table 1: Semantic differential scale

	Considerably	Somewhat	In the middle	Somewhat	Considerably	
Rough	-2	-1	0	1	2	Smooth
Warm	-2	-1	0	1	2	Cold
Dry	-2	-1	0	1	2	Damp
Soft	-2	-1	0	1	2	Hard
Unusual	-2	-1	0	1	2	Usual
Natural	-2	-1	0	1	2	Artificial
Cheap	-2	-1	0	1	2	Expensive
Pleasant	-2	-1	0	1	2	Unpleasant
Dark ^a	-2	-1	0	1	2	Light ^a
Shiny ^a	-2	-1	0	1	2	Matte ^a
Dislike	-2	-1	0	1	2	Like

^aOnly used in the tactile-visual task

Participants

The participants were invited to the study and tested in an activity centre for older adults located in Koper, Slovenia. Invited subjects had to be at least 65 years old and possess no health impairments that would interfere with the study protocol (e.g., heavily impaired vision). Subjects were not given any incentives for participation. Approximately 15% of the approached subjects chose to participate in the study. Before beginning testing, each subject signed an informed consent document to participate in the study. Altogether, 50 persons over the age of 65 ($M = 72.02$, $SD = 6.36$) took part in the study, of those 27 (54%) were women. Participants were tested in a room with no natural lighting – the amount of indoor light was thus fixed and similar for all participants. The duration of the test was approximately 30 minutes.

RESULTS AND DISCUSSION

We separately present results from the tactile, tactile-visual, and ranking task. In addition, we report correlations between descriptors within each – tactile and tactile-visual - task. Finally, we present correlations among the same descriptors between the tactile and tactile-visual task.

Mean scores and standard deviations for all pairs of descriptors and handrail samples in the tactile task are presented below (Table 2). The scores range from -2 (e.g., considerably rough) to 2 (e.g., considerably smooth). The scores of perceived warmth, dryness and softness are similar among all wooden handrails – they were perceived as somewhat warm, dry, and soft. Handrails created from modified wood were perceived as somewhat smooth, while the untreated handrails were perceived as slightly rougher. Wooden handrails were all perceived as neither cheap or expensive and somewhat/considerably usual, natural, pleasant and liked. Steel was on average perceived as smoother, colder, damper, and harder than wood (Table 2). In addition, it was evaluated as less natural, pleasant and liked, as well as slightly more expensive and unusual.

Table 2: Tactile task scores – M(SD)

	Spruce	Pine	A.Pine	T.M.Pine	T.M.Spruce	Steel
Rough (-2) – Smooth (2)	-0.66 (0.98)	-0.08 (0.92)	1.4 (0.81)	0.54 (1.01)	1.06 (1.04)	1.78 (0.62)
Warm (-2) – Cold (2)	-0.76 (0.87)	-0.68 (0.98)	-0.74 (0.88)	-0.94 (0.96)	-1.06 (0.87)	1.46 (0.71)
Dry (-2) – Damp (2)	-1.24 (0.96)	-1.36 (0.80)	-1.44 (0.84)	-1.36 (0.88)	-1.48 (0.81)	-0.56 (1.51)
Soft (-2) – Hard (2)	1.00 (1.07)	0.88 (1.12)	1.08 (1.24)	0.76 (1.36)	0.96 (1.23)	1.8 (0.73)

	Spruce	Pine	A.Pine	T.M.Pine	T.M.Spruce	Steel
Unusual (-2) – Usual (2)	1.30 (1.34)	1.18 (1.29)	1.5 (0.86)	1.46 (0.84)	1.22 (1.15)	0.8 (1.50)
Natural (-2) – Artificial (2)	-1.34 (1.22)	-1.66 (0.82)	-1.34 (1.00)	-1.40 (1.07)	-1.5 (1.09)	1.08 (1.54)
Cheap (-2) – Expensive (2)	-0.02 (1.02)	0.12 (0.98)	0.28 (1.18)	0.04 (0.97)	0.24 (1.02)	0.52 (1.27)
Pleasant (-2) – Unpleasant (2)	-1.10 (0.97)	-1.68 (0.62)	-1.70 (0.58)	-1.54 (0.73)	-1.62 (0.70)	-0.40 (1.51)
Dislike (-2) – Like (2)	0.92 (1.21)	1.38 (0.92)	1.44 (0.86)	1.40 (0.88)	1.44 (0.93)	0.48 (1.45)

Mean scores and standard deviations for all pairs of descriptors and handrail samples in the tactile-visual task are presented below (Table 3). Scores from the tactile-visual task are similar to the scores from the tactile task. All wooden handrails were perceived as somewhat warm, dry, and soft. The perceived roughness in wooden handrails ranged from neither smooth or rough to somewhat smooth. Compared to wood, steel handrail was perceived as smoother, colder, damper and harder. All samples of wood were perceived as somewhat/considerably matte, while steel was perceived as somewhat shiny. Perceptions of darkness varied between the samples – stainless steel, unmodified spruce and pine, and acetylated radiata pine were perceived as somewhat/considerably light, while thermally modified spruce and pine were perceived as somewhat dark. All wooden samples were perceived as neither cheap or expensive, somewhat usual, somewhat/considerably natural, pleasant and liked, while the steel sample was perceived as somewhat usual, artificial, and expensive; in the middle/somewhat pleasant and liked.

Table 3: Tactile-visual task scores – M(SD)

	Spruce	Pine	A.Pine	T.M.Pine	T.M.Spruce	Steel
Rough (-2) – Smooth (2)	-0.36 (1.08)	0.00 (1.20)	1.64 (0.75)	0.34 (1.02)	1.10 (0.99)	1.86 (0.64)
Warm (-2) – Cold (2)	-0.98 (1.04)	-0.92 (0.99)	-1.06 (0.98)	-1.04 (1.12)	-1.26 (0.88)	1.44 (0.81)
Dry (-2) – Damp (2)	-1.42 (0.76)	-1.48 (0.89)	-1.66 (0.66)	-1.46 (0.84)	-1.62 (0.73)	-0.98 (1.30)
Soft (-2) – Hard (2)	0.64 (1.37)	0.64 (1.40)	0.72 (1.41)	0.74 (1.35)	0.88 (1.36)	1.88 (0.44)
Unusual (-2) – Usual (2)	1.06 (1.32)	1.16 (1.17)	1.22 (1.17)	1.32 (1.04)	1.28 (1.07)	0.82 (1.45)
Natural (-2) – Artificial (2)	-1.66 (0.75)	-1.66 (0.87)	-1.3 (1.22)	-1.34 (1.32)	-1.34 (1.10)	0.98 (1.57)
Cheap (-2) – Expensive (2)	-0.2 (1.09)	-0.10 (1.20)	0.06 (1.10)	0.04 (1.09)	0.32 (1.20)	1.02 (1.08)
Pleasant (-2) – Unpleasant (2)	-1.4 (0.83)	-1.64 (0.80)	-1.52 (0.81)	-1.52 (0.91)	-1.76 (0.56)	-0.62 (1.29)
Dark (-2) – Light (2)	1.58 (0.78)	1.44 (0.70)	1.24 (0.82)	-0.7 (0.84)	-0.96 (0.86)	1.24 (0.87)
Shiny (-2) – Matte (2)	1.52 (0.93)	1.52 (0.76)	1.44 (0.84)	1.62 (0.73)	1.34 (1.06)	-1.34 (0.87)
Dislike (-2) – Like (2)	1.04 (1.21)	1.40 (0.90)	1.36 (0.92)	1.16 (1.08)	1.22 (0.89)	0.56 (1.46)

Ranking task results are presented below (Table 4). For each sample, we calculated the sum of all ranks received from participants. We reranked the samples according to these sums - the handrails with lower sums received higher rankings. The highest ranked material was thermally modified spruce, followed by acetylated radiata pine, untreated pine, and thermally modified pine. The two materials with the lowest ranking were stainless steel and unmodified spruce.

Table 4: Ranking task scores

	Spruce	Pine	A.Pine	T.M.Pine	T.M.Spruce	Steel
Rank	6	3	2	4	1	5

The Pearson correlation coefficients were calculated for each pair of descriptors within the tactile task (Table 5). Handrails that were rated as less liked were rated as more unusual ($r = 0.35$, $p < 0.01$), but less warm ($r = -0.36$, $p < 0.01$), dry ($r = -0.28$, $p < 0.01$), natural ($r = -0.34$, $p < 0.01$), and pleasant ($r = -0.74$, $p < 0.01$).

Table 5: Correlations among descriptors within the tactile task

	Rough	Warm	Dry	Soft	Unusual	Natural	Expensive	Pleasant	Like
Rough	-								
Warm	.28**	-							
Dry	.03	.40**	-						
Soft	.26**	.20**	-.11	-					
Unusual	.06	-.28**	-.29**	.11	-				
Natural	.24**	.56**	.30**	.14*	-.31**	-			
Cheap	.16**	.14*	.02	.16**	-.12*	.09	-		
Pleasant	-.06	.47**	.29**	.00	-.29**	.43**	.00	-	
Dislike	.11	-.36**	-.28**	.05	.35**	-.34**	.07	-.74**	-

* $p < .05$, ** $p < .01$

The Pearson correlation coefficients calculated for each pair of descriptors within the tactile-visual task are presented below (Table 6). Handrails that were rated as less liked were also perceived as less warm ($r = -0.40$, $p < 0.01$), dry ($r = -0.30$, $p < 0.01$), natural ($r = -0.28$, $p < 0.01$), pleasant ($r = -0.67$, $p < 0.01$), and more unusual ($r = 0.34$, $p < 0.01$) and shiny ($r = 0.25$, $p < 0.01$).

Table 6: Correlations among descriptors within the tactile-visual task

	Rough	Warm	Dry	Soft	Unusual	Natural	Cheap	Pleasant	Dark	Shiny	Dislike
Rough	-										
Warm	.13*	-									
Dry	-.11	.36**	-								
Soft	.22**	.24**	-.08	-							
Unusual	.08	-.28**	-.27**	.07	-						
Natural	.21**	.56**	.24**	.22**	-.21**	-					
Cheap	.21**	.20**	-.04	.32**	.02	.21**	-				
Pleasant	.00	.49**	.38**	.08	-.38**	.40**	-.06	-			
Dark	.00	.15*	-.01	.05	-.02	.05	-.05	.06	-		
Shiny	-.34**	-.64**	-.22**	-.20**	.20**	-.57**	-.29**	-.41**	-.11	-	
Dislike	.09	-.40**	-.30**	-.04	.34**	-.28**	.07	-.67**	-.02	.25**	-

* $p < .05$, ** $p < .01$

Correlations between the same pairs of descriptors in the tactile and the tactile-visual task are presented below (Table 7). Correlations among all descriptors between the tactile and tactile-visual task are medium to large in size. This suggests that touch plays an important role in the perception and evaluation of materials even when the materials can be examined visually.

Table 7: Correlations among the same descriptors between the tactile and the tactile-visual task

Rough	Warm	Dry	Soft	Unusual	Natural	Cheap	Pleasant	Dislike
.68**	.71**	.49**	.60**	.34*	.60**	.48**	.53**	.53**

* $p < .05$, ** $p < .01$

CONCLUSIONS

In this study, we examined the perception and evaluation of modified wood compared with untreated wood and stainless steel. Our results indicate that modified wood is perceived and evaluated similarly as untreated wood, while the perception and evaluation of steel differs from all types of wood. Compared to steel, all types of wood received higher overall preference ratings in both the tactile and tactile-visual task. In the ranking task, wood generally received higher ranks than steel, and modified wood was on average rated higher than untreated wood. Results also indicate that touch can have an important role in the perception and evaluation of materials, as the correlation between the tactile and visual-tactile tests were very strong. Taken together, the findings of this study suggest that modified wood possesses tactile and visual features that are liked among older adults. These findings encourage further usage of modified wood in indoor environments. Using handrails manufactured from modified wood would not only decrease the usage of non-renewable materials, but also put older adults in frequent contact with the materials they prefer.

ACKNOWLEDGEMENTS

The authors gratefully acknowledge the European Commission for funding the InnoRenew CoE project (Grant Agreement #739574) under the H2020 Widespread-Teaming programme and Lulea University of Technology for providing the wood samples.

REFERENCES

- Bakar, B.F.A., Hiziroglu, S. and Tahir, P.M. (2013). Properties of some thermally modified wood species. *Materials & Design*, **43**, 348-355.
- Bhatta, S.R., Tiippana, K., Vahtikari, K., Hughes, M. and Kyttä, M. (2017). Sensory and emotional perception of wooden surfaces through fingertip touch. *Frontiers in Psychology*, **8**, 367.
- Esteves, B.M. and Pereira, H.M. (2009). Wood modification by heat treatment: A review. *BioResources*, **4**(1), 370-404.
- Fujisaki, W., Tokita, M. and Kariya, K. (2015). Perception of the material properties of wood based on vision, audition, and touch. *Vision Research*, **109**, 185-200.
- Guest, S., Dessirier, J.M., Mehrabyan, A., McGlone, F., Essick, G., Gescheider, G., Fontana, A., Xiong, R., Ackerley, R. and Blot, K. (2011). The development and validation of sensory and emotional scales of touch perception. *Attention, Perception, & Psychophysics*, **73**(2), 531-550.
- Ikei, H., Song, C. and Miyazaki, Y. (2017a). Physiological effects of touching coated wood. *International Journal of Environmental Research and Public Health*, **14**(7), 773.
- Ikei, H., Song, C. and Miyazaki, Y. (2017b). Physiological effects of touching wood. *International Journal of Environmental Research and Public Health*, **14**(7), 801.

Kidoma, K., Okamoto, S., Nagano, H. and Yamada, Y. (2017). Graphical modeling method of texture-related affective and perceptual responses. *International Journal of Affective Engineering*, **16**(1), 27-36.

Sakuragawa, S., Miyazaki, Y., Kaneko, T. and Makita, T. (2005). Influence of wood wall panels on physiological and psychological responses. *Journal of Wood Science*, **51**(2), 136-140.

Sandberg, D., Kutnar, A. and Mantanis, G. (2017). Wood modification technologies - a review. *iForest*, **10**, 895-908.



zekerheid met meerwaarde



ModWoodLife

ISBN: 978-90-829466-1-1